



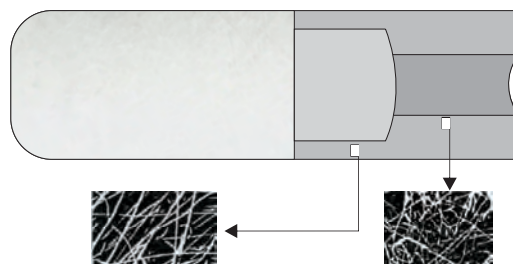
BURTON⁺ FILTER CARTRIDGES

DESCRIPTION

Burton filter cartridge has radial fibers which distribute gradiently, and gradually becomes loose from inside to outside or from outside to inside. The outside layer is coarse, providing enough dirty-absorbent, reducing the filter resistance, ensuring enough rigid structure. The inside layer is fine, which provides finer particles filtration.

BENEFITS

- » Adaptability mildew resistance, acid, alkali, organic or inorganic solvent resistance
- » High Filtration Efficiency
- » Small Pressure Lose & Stable Filter Efficiency
- » Long Service Life & Low Filter
- » High quality polypropylene for outmost safety



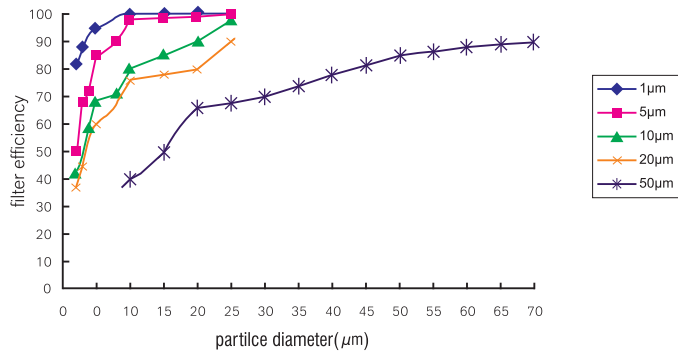
Coarse outside layer provides enough dirty-absorbent space, reduces filter resistance and provides enough structure rigidity.

Fine inside layer intercepts small particulate, assuring the filter precision.

TECHNICAL SPECIFICATIONS

- » Inside diameter (mm) : 20, 25, 28, 38 mm
- » Outside diameter (mm) : 35-120 mm
- » Length : Free
- » Nominal Precision(Micron) : 0.5 - 100 μ m

FILTER EFFICIENCY



PRESSURE LOSS

